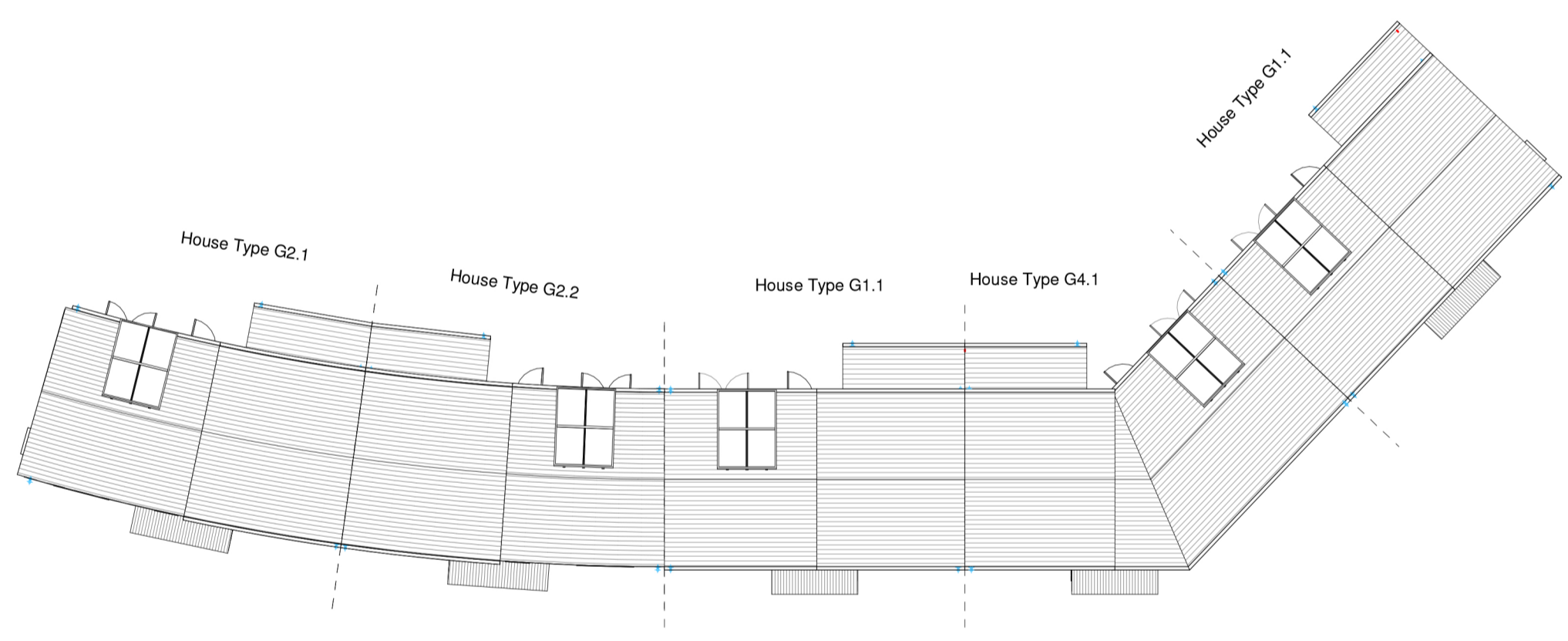


1 Block 16-G1- Second Floor Plan  
1:100



2 Block 16-G1- Roof Plan  
1:200



3 Block 16-G1- Front Elevation  
1:100

HOUSE TYPE G1.1, G1.2  
3 BEDROOM / 6 PERSON  
FLOOR AREA 128.6 M2 / 1384.3 SQFT

Ht.G1.1, G1.2	Dwelling Type	Gross Floor Area	Minimum Main Living room	Aggregate living area	Aggregate bedroom area	Storage
Target	3 Bed 6P house	110	15	37	36	6
Proposed	3 Bed 6P house	128.6	18	42.4	37.5	6

PLEASE NOTE:  
Minimum unobstructed living room width 3.8m.  
Main bedroom area 13m2, Double room 11.4m2 (2.8m minimum width), Single 7.1m2 (2.1m minimum width)

HOUSE TYPE G2.1, G2.2  
3 BEDROOM / 6 PERSON  
FLOOR AREA 133.8 M2 / 1440.2 SQFT

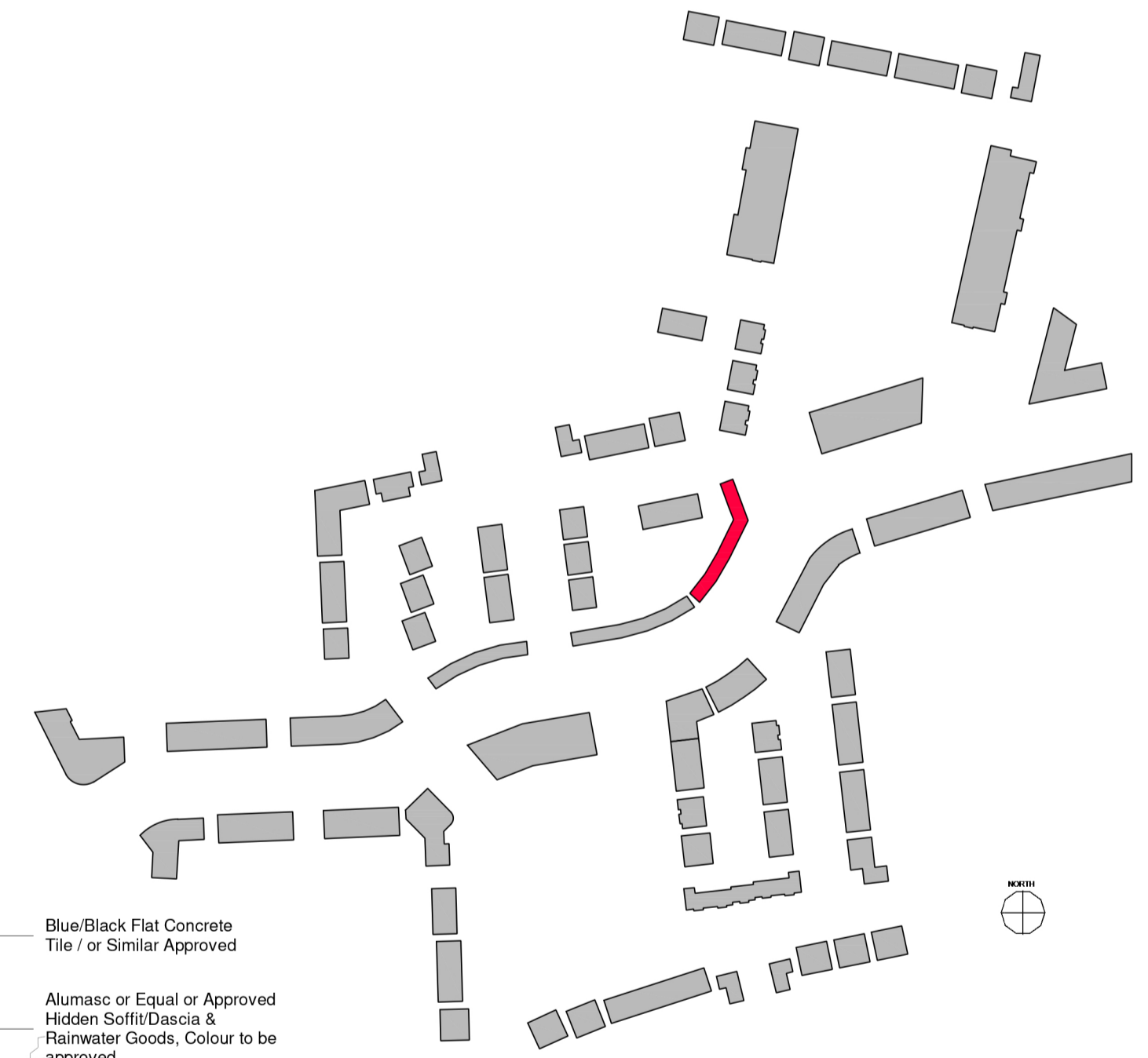
Ht.G2.1, G2.2	Dwelling Type	Gross Floor Area	Minimum Main Living room	Aggregate living area	Aggregate bedroom area	Storage
Target	3 Bed 6P house	110	15	37	36	6
Proposed	3 Bed 6P house	133.8	19.7	43.7	39.5	6

PLEASE NOTE:  
Minimum unobstructed living room width 3.8m.  
Main bedroom area 13m2, Double room 11.4m2 (2.8m minimum width), Single 7.1m2 (2.1m minimum width)

HOUSE TYPE G4.1  
4 BEDROOM / 7 PERSON  
FLOOR AREA 156.4 M2 / 1683.4 SQFT

Ht.G3.1, G3.2	Dwelling Type	Gross Floor Area	Minimum Main Living room	Aggregate living area	Aggregate bedroom area	Storage
Target	4 Bed 7P house	120	15	40	43	6
Proposed	4 Bed 7P house	140.4	19.0	42.4	46.8	8

PLEASE NOTE:  
Minimum unobstructed living room width 3.8m.  
Main bedroom area 13m2, Double room 11.4m2 (2.8m minimum width), Single 7.1m2 (2.1m minimum width)



- Blue/Black Flat Concrete Tile / or Similar Approved
- Alumasc or Equal or Approved Hidden Soffit/Dascia & Rainwater Goods, Colour to be approved
- Soltherm or Equivalent Pre-Finished External Render To Be Approved By The Architects
- Straight Edged Coated Aluminium Cill to Match Window RAL Colour
- HW/Aluminium Double Glazed Window to be Approved Design. Refer to Spec for U-Value etc.
- Entrance Aluminium Coated Canopy to Match Window RAL Colour
- Selected Brick Finish to Outer Leaf Brick Type and Colour To Be Approved By The Architects

REV. NR	ISSUED BY	REV. DESCRIPTION	REV. DATE

CPN Note:  
ALL WORKS TO BE CARRIED OUT USING PROPER MATERIALS WHICH ARE FIT FOR THE USE THEY ARE INTENDED AND FOR THE CONTRACTOR TO BE RESPONSIBLE TO USE ALL MATERIALS USED IN CONNECTION WITH THE WORKS TO COMPLY WITH THE CONSTRUCTION PRODUCTS REGULATION (CPR) NO. 305/2011 AND THE HARMONISED TECHNICAL SPECIFICATION STANDARDS THAT FALL WITHIN THE SCOPE OF THE CPR NO. 305/2011

**van Dijk Architects**  
HILL HOUSE HILL STREET DUNDALK CO. LOUTH  
PH. 042-9354466 FAX. 042-9354460  
INFO@VANDIJKARCHITECTS.COM

DRAWING TITLE  
BLOCK 16 - UNITS - G11 / G21 / G22 / G41 PLANS & ELEVATION

SCALE	DRAWING NUMBER	REV.	CLIENT
AS INDICATED	1757-PA-BL16-101	1	CLONMINTCH TULLAMORE
REVISION	PROJ. STATUS		
			STEINFORT INVESTMENT
REVISION BY	DRAWN BY	DATE	
	DW	OCTOBER 2021	

NOTE:  
FIGURED DIMENSIONS MUST BE USED IN PREFERENCE TO SCALED DIMENSIONS. ANY DIMENSIONAL DISCREPANCIES MUST BE REPORTED TO THE ARCHITECT IMMEDIATELY. THIS DRAWING REMAINS THE COPYRIGHT OF VAN DIJK ARCHITECTS. IT MUST NOT BE USED FOR ANY PURPOSE BOUND OR UNBOUND WITHOUT THE EXPRESS PERMISSION OF THE PRACTICE. DO NOT COPY OR REDISTRIBUTE THESE DRAWINGS OR ANY ADDITIONAL INFORMATION WITHOUT THE EXPRESS APPROVAL OF vanDijk Architects